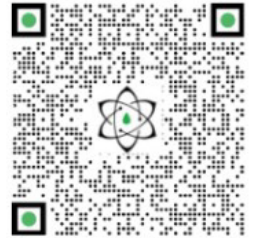




TECHNICAL REPORT

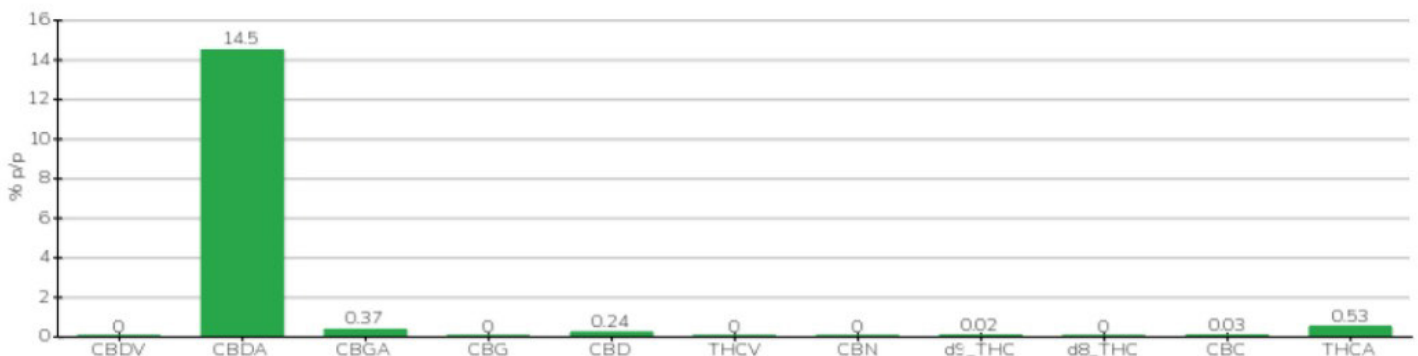


Committente		Etichetta	PINK BUNNY
Data accettazione	21/11/2022	Tipologia campione	bio massa
Data analisi	21/11/2022	varietà	Finola
Codice riferimento interno	SOO2111.1	N. Cartellino	1074100848651
Metodica analitica	HPLC - HS - Rev.2	Campionamento	a cura del cliente
Lotto	B30946202000001		

Note

Parametro	% p/p	Metodo
CBDV	<0.01%	HPLC-UV
CBDA	14.50%	HPLC-UV
CBGA	0.37%	HPLC-UV
CBG	<0.01%	HPLC-UV
CBD	0.24%	HPLC-UV
THCV	<0.01%	HPLC-UV
CBN	<0.01%	HPLC-UV
d9_THC	0.02%	HPLC-UV
d8_THC	<0.01%	HPLC-UV
CBC	0.03%	HPLC-UV
THCA	0.53%	HPLC-UV
CBD TOTALE	12.95%	CALCOLATO
CBG TOTALE	0.32%	CALCOLATO
THC TOTALE	0.49%	CALCOLATO

CAMPIONE ANALIZZATO: Finola(10.00gr)



Pineto

21/11/2022

riferimento cartellino

